

0316-008

118

(A P.U.D.)

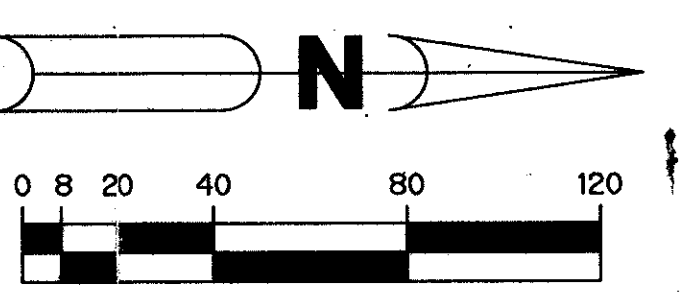
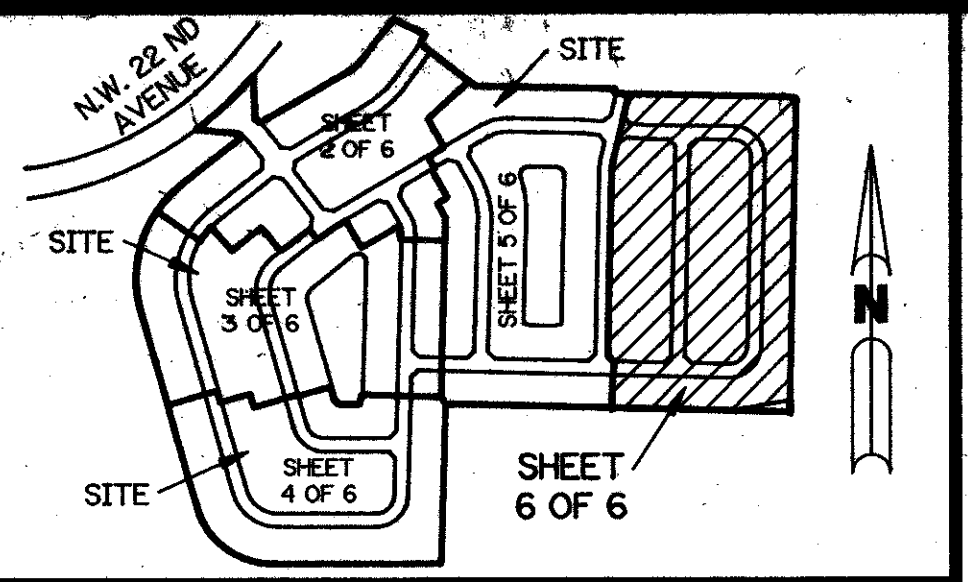
RAINBOW LAKES - TRACT "A"

A REPLAT OF A PORTION OF TRACT "A" ACCORDING TO THE PLAT OF TARTAN LAKES PLAT NO. 3 - P.U.D. AS RECORDED IN PLAT BOOK 51, PAGES 170 THROUGH 174 INCLUSIVE, OF THE PUBLIC RECORDS OF PALM BEACH COUNTY, FLORIDA. SECTIONS 14 AND 23, TOWNSHIP 45 SOUTH, RANGE 42 EAST

SHEET 6 OF 6

MAY, 1989

THIS INSTRUMENT PREPARED BY PERRY C. WHITE P.L.S. 4213 STATE OF FLORIDA LAWSON, NOBLE AND ASSOCIATES, INC. ENGINEERS PLANNERS SURVEYORS WEST PALM BEACH, FLORIDA

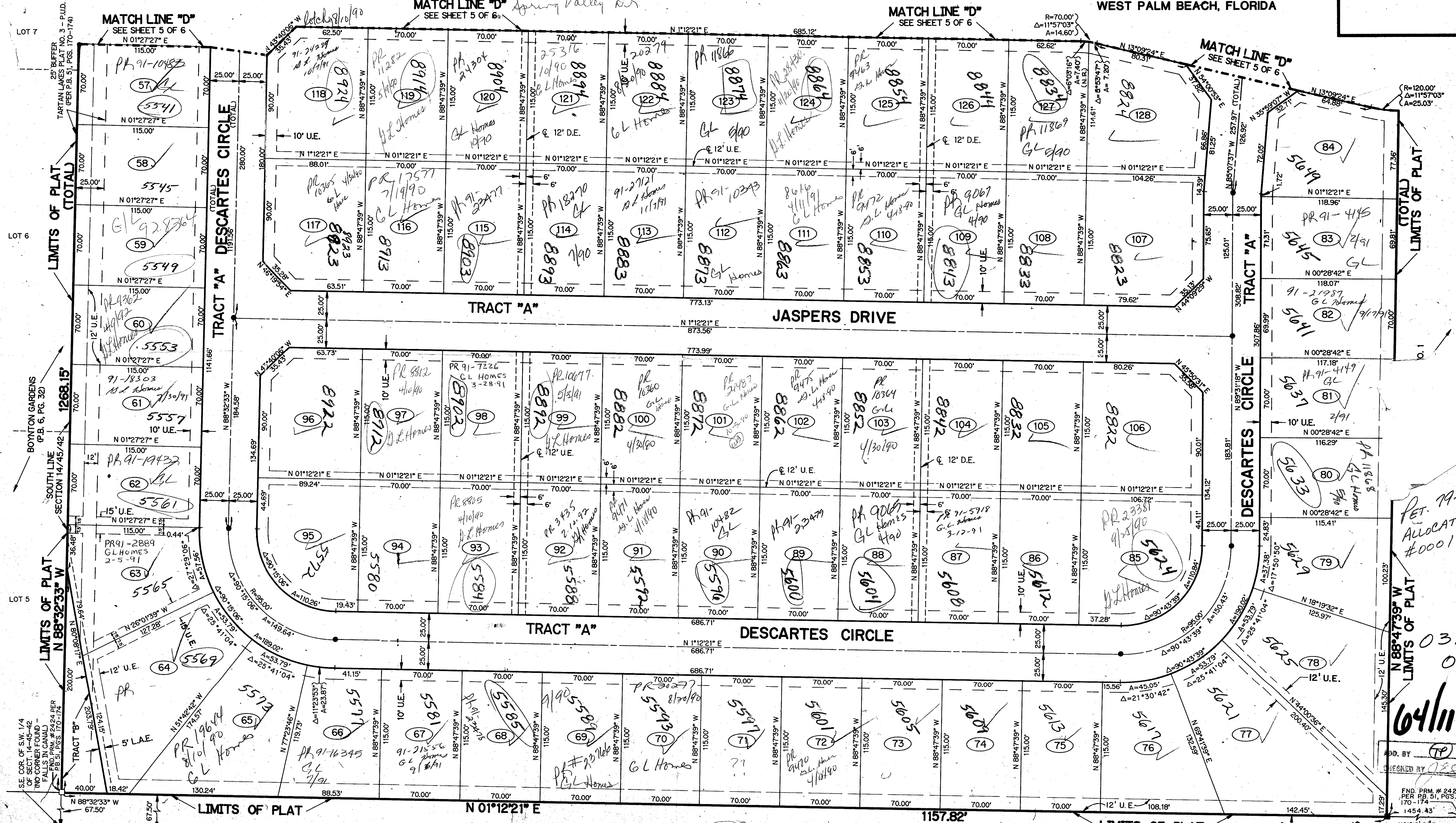


SCALE: 1" = 40'

MATCH LINE "D" SEE SHEET 5 OF 6

MATCH LINE "D" SEE SHEET 5 OF 6

MATCH LINE "D" SEE SHEET 5 OF 6



SUBMISSION Rainbow Lakes Tract "A" BOOK 64 PAGE 119 PLAT NO. 3 P.U.D. R.T.S. CHAD A 14-34 20000 TIP CODE 334987 CH 78-17-35 TRACT "A" TA2 44/14/83/15/16

PET. 79-177 ALLOCATION #0001

0316 008

64/118